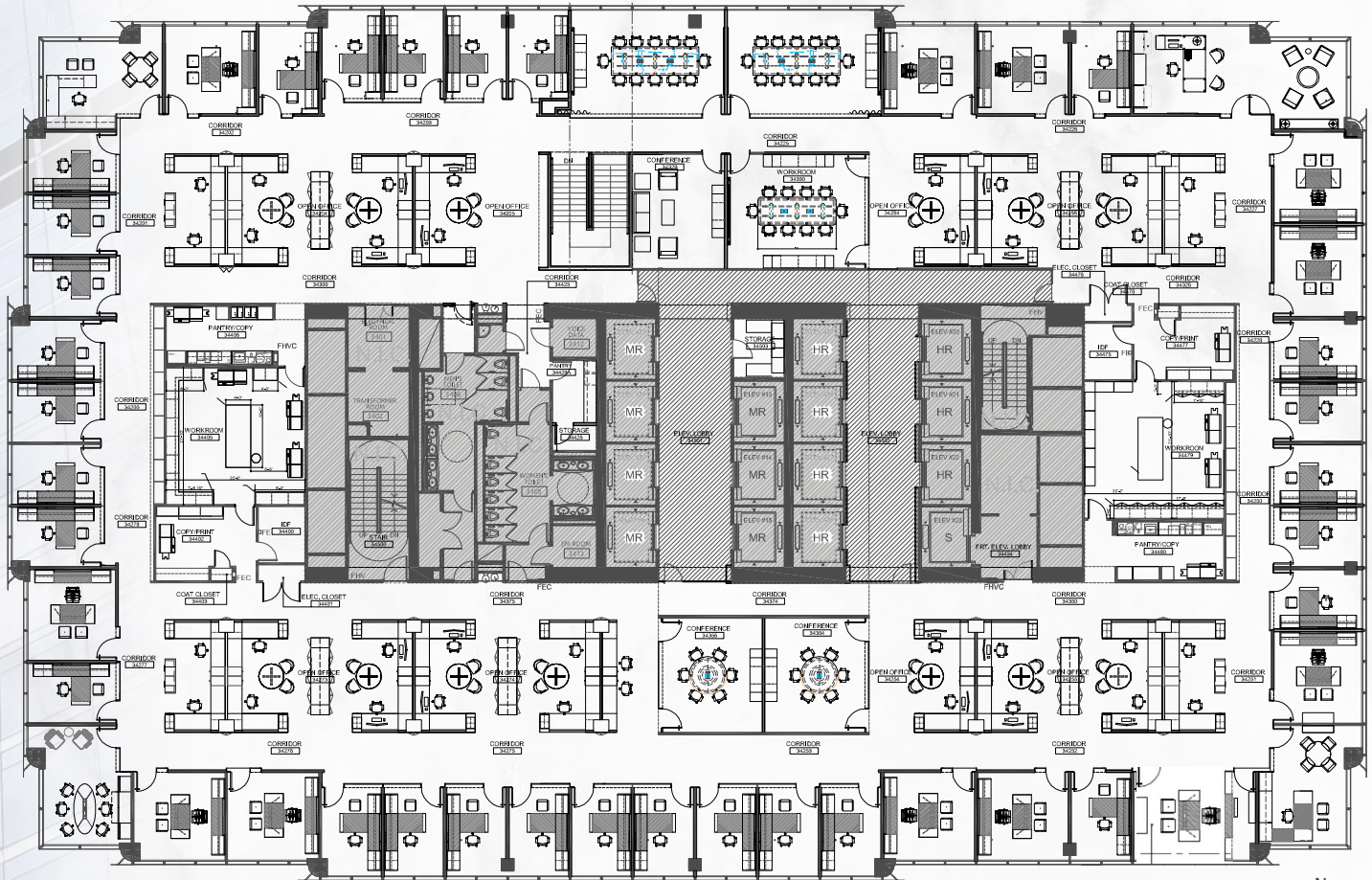


SUITE 3400

28,413 RSF

Available 1/1/2025

353 NORTH CLARK



FOR MORE INFORMATION, CONTACT:

SETH TUSCHER

312.935.1920

seth.tuscher@cbre.com

MIKE KAZMIERCZAK

312.861.7899

michael.kazmierczak@cbre.com

CBRE